



**Model**  
**944E-42**  
**TELEHANDLER**

**Performance**

- Rated Capacity**  
9,000 lb (4,082 kg)
- Maximum Lift Height**  
42 ft (12.8 m)
- Frame Leveling**  
12 degrees
- Lift Speed (boom retracted, no load)**  
Up: 16 sec  
Down: 13 sec
- Boom Speed (no load)**  
Extend: 13 sec  
Retract: 13 sec
- Travel Speed Forward**  
20 mph (32 kmph) max.
- Drawbar Pull (loaded)**  
24,350 lb (11,045 kg) in first gear
- Operating Weight**  
With 48 in. Carriage and Forks  
27,265 lb (12,367 kg)
- Forward Reach**  
35 ft 6 in. (10.8 m)
- Horizontal Load Placement Distance**  
80 in. (2.0 m)

**Standard Specifications**

- Engine**
  - Make and Model Cummins QSB4.5T Turbo
  - Fuel Diesel
  - Cycles 4
  - No. of Cylinders 4
  - Displacement 276 cu in (4.5 L)
  - Torque Rating 305 lb ft (414 Nm)  
@ 1,500 rpm
  - Rated Speed 2,500 rpm
  - Max. Gross BHP 110 hp (82 kW)
  - Fuel Tank 46 gal (174 L)
  - Engine Block Heater
  - Engine Grid Heat System
- Engine Filters**
  - Two-stage centrifugal air cleaner.
  - Serviceable fuel filter/water separator.
  - Full-flow replaceable-element engine oil filter.
- Electrical System**
  - Voltage 12V
  - Alternator 65 amp
  - Battery Two batteries, each with 850 cold cranking amps at 0°F

**Transmission**

Modulated powershift with integral full gear-drive dropbox.  
4-speed forward and 3-speed reverse.

**Axles**

Full-time planetary 4-wheel drive.  
Limited slip front differential.  
Stabil-Trak rear axle stability system.

**Brakes**

Inboard mounted internal wet disc brakes.

**Parking Brakes**

Spring applied, hydraulically released parking brake with transmission declutch feature.

**Tires**

Standard Air-filled 15:50 x 25—12 ply

**Fenders**

**Cab**

Certified ROPS/FOPS structure.  
Steering wheel mounted horn and back-up alarm.  
Rear view mirrors.

**Steering**

4-wheel circle, 4-wheel crab, 2-wheel front.

**Instruments**

Hydraulic oil temperature, fuel level, tachometer, and hourmeter gauges.  
Warning indicators for transmission oil temperature, hydraulic oil temperature, engine oil pressure, alternator charging, air filter restriction, hydraulic oil filter restriction, and low brake pressure.  
Indicators for parking brake and Stabil-Trak system.

**Controls**

Multi-function, fully proportional pilot operated joystick controls for boom functions, carriage tilt, auxiliary control, frame leveling, and horizontal load placement system.

**Hydraulic System**

Load sensing dual gear pumps.  
33.5 gal (127 L) system capacity.

**Auxiliary Hydraulics**

Used for all attachments equipped with cylinders or other hydraulic components. Consists of valves, controls and hydraulic lines.

**Accessories & Options**

**Cab Enclosure**

**Road and Work Lights**

**Work Lights**

**Air Conditioning**

**Tire Options**

- Foam-filled
- Rock

**Attachments**

**Standard Carriage**

48 in. (1.2 m), 50 in. (1.3 m),  
60 in. (1.5 m) or 72 in. (1.8 m)

**± 10° Side Tilt Carriage**

48 in. (1.2 m), 50 in. (1.3 m),  
60 in. (1.5 m) or 72 in. (1.8 m)

**± 45° Swing Carriage**

72 in. (1.8 m)

**Pallet Forks**

2.36 x 4 x 48 in.  
(60 mm x 102 mm x 1.2 m)

**Lumber Forks**

1.75 x 7 x 60 in.  
(45 mm x 178 mm x 1.5 m)

**Block Forks**

2 x 2 x 48 in.  
(51 mm x 51 mm x 1.2 m)

**Truss Boom With or Without Winch**

10 ft (3.0 m)

**Truss Boom With Winch**

3 ft (0.91 m)

**Light Material Bucket**

1.25 cu yd (0.95 m<sup>3</sup>) capacity  
96 in. (244 cm) width

**Sheet Material Handler**

**Hydraulic Fork Position Carriages**

50 in. (1.27 m)  
Single and dual fork options

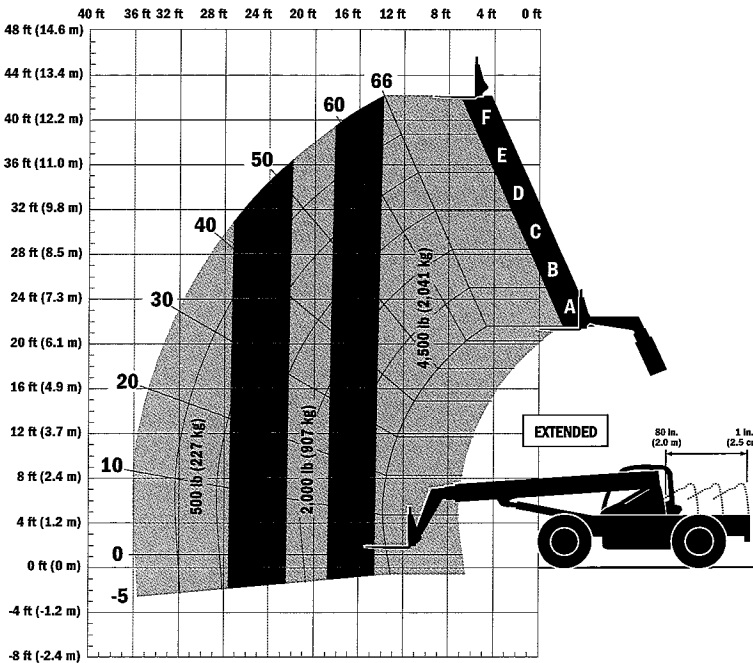
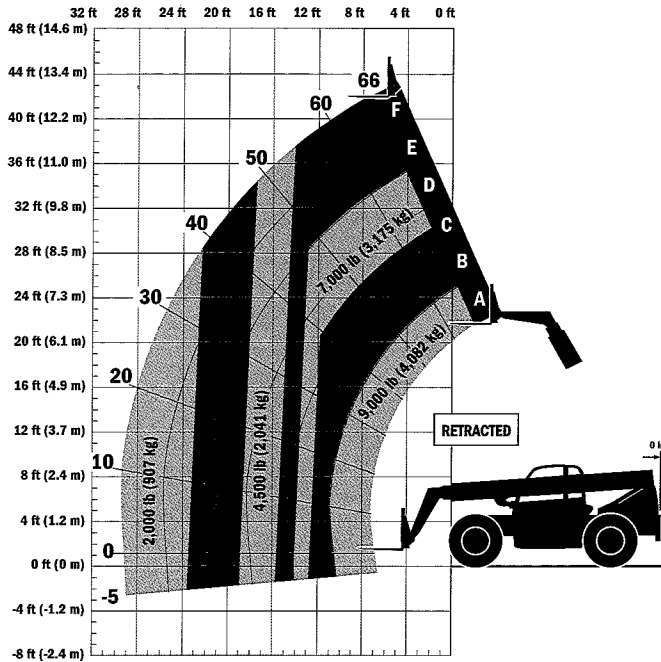
**Fork Mounted Work Platform**

**Crane Hook**

# Model 944E-42 TELEHANDLER

## Dimensions

Length (less forks)	253 in. (6.43 m)
Width	101 in. (2.56 m)
Height	95.5 in. (2.42 m)
Wheelbase	131 in. (3.33 m)
Ground Clearance	16 in. (406 mm)
Outside Turning Radius	147 in. (3.73 m)
Max. Reach from Front Tires to 24 in. (609 mm) Load Center	35 ft 6 in. (10.82 m)



## IMPORTANT

Rated lift capacities shown are with machine equipped with carriage and pallet forks. The machine must be level on a firm surface with undamaged, properly inflated tires. Machine specifications and stability are based on rated lift capacities at specific boom angles and boom lengths. (If specifications are critical, the proposed application should be discussed with your dealer.)

DO NOT exceed rated lift capacity loads, as unstable and dangerous machine conditions will result.

DO NOT tip the machine forward to determine the allowable load.

Use only JLG approved attachments with proper material handler model/attachment load capacity charts displayed in the operator's cab. OSHA requires all rough terrain forklift operators be trained according to OSHA 29 CFR 1910.178 (1).



Due to continuous product improvements, JLG Industries reserves the right to make specification and/or equipment changes without prior notification. This machine meets or exceeds ASME B56.6-1998 as originally manufactured for intended applications.

Form No.: SS-L944E-42-0104-15M  
Part No.: 3132501  
R020702  
Printed in USA

**JLG Industries, Inc.**  
An Oshkosh Truck Corporation Company  
1 JLG Drive  
McConnellsburg, PA 17233-9533  
Telephone 717-485-5161  
Toll-free in US 877-JLG-LIFT  
Fax 717-485-6417  
[www.jlg.com](http://www.jlg.com)